



The CUBE

VOLUME XXXV, Number 1—April 2014

President's Message

By NELL CORKIN

It certainly has been an interesting winter for many of us, with weather across the spectrum from drought in California to ice storms in New England and floods in Britain. Here in Michigan, it has been a good year to look out at the gray skies and mounds of snow from my cozy studio and be thankful for electric lights and central heating—as long as the power didn't go out, that is!



In spite of the weather, we have been moving forward with our plans for celebrating the Guild's 35th anniversary. We have many wonderful events coming up, the first of which will be our live auction on April 11th at Tom Bishop's Chicago International Show and our annual "This is the Guild" presentation the next day. As always, the Gallery of the Guild will have a table at the show, with special pieces by IGMA Artisan and Fellow members. We hope to see you there!

The Guild is working hard to increase our internet presence this year, in order to keep members up to date on what's happening, make it easier for everyone to participate in Guild activities, to provide more services to our members, and to reach out to those who have never heard of us.

In addition to our IGMA and Guild School Facebook pages, we are starting an email newsletter and will soon be announcing a new feature on our web site which will be of interest to those who craft miniatures in any scale.

It is often said that an organization is only as strong as its members, and this is certainly true of the Guild. Whether you are an Artisan, Fellow, Family, or General Member, it is your passion for high quality miniature craftsmanship that makes you vital to achieving our goal of recognizing and promoting fine miniatures as an art form. Your questions, comments or ideas are always very welcome, and I would like to encourage you to chat with any Board member you see at a show. We are easily identified by our **bright red badges!**



Thank you all so much for the time, talent and financial support you have given the Guild over the last thirty-five years. The best is yet to come!



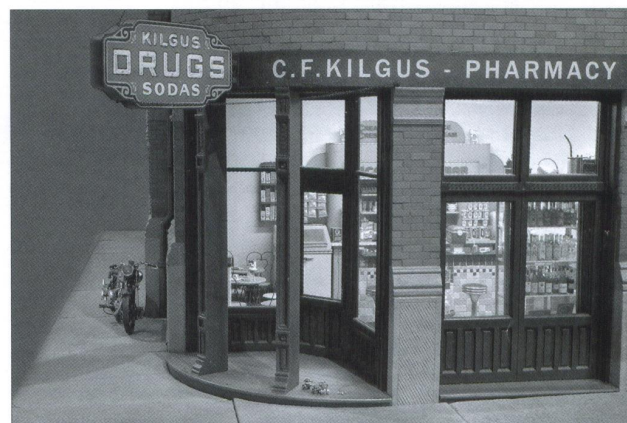
Memories in Miniature: The Kathleen Savage Browning Miniatures Collection

By SHARON DODDROE

Photography by Kim McKisson

Kaye Browning watched intently as the little girl with a ponytail pressed her face against the glass of a room box in the Kathleen Savage Browning Miniatures Collection at the Kentucky Gateway Museum Center. There was something warmly familiar about the look on the child's face...in the enamored gaze of her eyes. It was *wonder*—a feeling Kaye knows well.

continued on page 13



The Cox building, constructed by Allison Ashby and Steve Jedd, houses the former Kilgus Drug store, just as it was when Kaye sat at the counter as a girl.

on the inside...

President's Message; Memories in Miniature.....	1, 13
Board/Committees; A & F Meetings; Memorials & Tributes.....	2
GSP Strawberry Banke, Portsmouth, NH.....	3
Guild Show.....	4
Auctions; Gallery of the Guild.....	5
Guild School Scholarships.....	6-7, 14
GSP Colonial Williamsburg.....	8-12, 14
IGMA Classes in London.....	14
Focus on Members.....	15
Calendar Dates to Remember.....	16

Don't Miss These in 2014! Guild School, June 7-13; Guild Show August 9-10

continued from page 1

Memories in Miniature

"I still feel it when I look at miniatures," she explains, "but my appreciation and sense of wonderment now encompasses so much more than beauty and craftsmanship because of the relationships and memories I have made with artisans over the years."

A stroll through the gallery with Kaye is not only an intimate trip down memory lane, but also an insightful look at history through the eyes of a collector and the artisans who recreate miniatures with exacting historical accuracy. "When I work with artisans who are passionate about recreating an item as it was initially constructed, I know I am witnessing a true art form," says Kaye, who enjoys researching the provenance of the original items alongside the artists.

Her combined love of history and collectible miniatures has guided her acquisitions and commissions over the past four decades, but Kaye admits many of her favorite miniatures were selected simply because they remind her of something special. "Sometimes I cherish an item because it reminds me of a time I've spent with the artisan—in a class or a conversation; or I'll admire an acquired piece because I know that another collector, like Sarah Salisbury, once treasured it, too. Other pieces are sentimental to me for personal reasons," says Kaye.

The Fleece Inn by Pam Throop is one of those pieces. Kaye and her husband, Louis, spent their 27th wedding anniversary at the 15th-century inn in Bretforton, Gloucestershire, England. They have wonderful memories of not only their stay there, but of discussing the inn's miniature with Pam. "It was the last house she made before she passed away," explains Kaye. "When I look at the inn I'm reminded of the time we spent together placing all the items in its rooms."

Another coveted exhibit is Kaye's first miniature house, *Westbury Hall*, depicting

her bedroom as it was when she was a child. It contains the first piece she ever collected—a perfectly scaled spool bed. There are hundreds of other items throughout the gallery that tell stories: a delicate white dress with embroidered flowers is a replica of one Kaye wore as a girl on the day of Queen Elizabeth's coronation; the dog in front of The Fleece Inn is a tribute to one of the Brownings' former yellow labs, Gentry. Several pieces she made herself while attending classes with various artists—all reminding her of the camaraderie spent with fellow IGMA members.

Visitors to the gallery may never realize how personal the collection is to Kaye, but they are certain to come away from the museum with the same sense of amazement as the little girl with the ponytail. Whether they're first-time admirers or serious collectors, the KSBMC features pieces to satisfy all interests. Its 3,300-square-foot gallery is anchored by Spencer House, the magnificent ancestral home of Princess Diana created by Kevin Mulvany and Susie Rogers. Filled with three floors of fine furnishings and historically accurate pieces from such notables as John Hodgson, Nancy Summers, and Leslie Smith, it alone could hold visitors' attention for hours. The center rotunda, highlighted by its marble compass-rose floor, features some of the gallery's most prized works, including Foster Tracy's first violin shop, and pieces by Geoffrey Wonnacott, Barry Hipwell, Ernie Levy, and Bill Robertson. And children and adults alike are always delighted by the twenty-five

charming fairy tale and nursery rhyme displays by Hanna Hyland and Jane Davies. Those exhibits add a touch of whimsy to the more than one hundred room boxes, homes, and vignettes that seemingly transport visitors to a multitude of geographic locations and time periods.

While the gallery could certainly be used to illustrate world history, Kaye is partial to the pieces depicting memories of her childhood in her hometown of Maysville. She commissioned Chicago artisans Allison Ashby and Steven Jedd to create the miniature structures, which took years in the making. There's the Cox building, which houses the former Kilgus Drug store, just as it was when Kaye sat at the counter as a girl, the Bethel Baptist Church with small Bibles and hymnals, and the miniature façade of the town's historic Russell Theatre. This April, Kaye will debut the long-awaited interior of the famous theater during a special two-day celebration.

"I can't wait to reminisce about the Russell Theatre with the community and to talk with artisans and collectors who share my passion for miniatures," says Kaye. The event will undoubtedly provide many new and lasting memories to come.

The Russell Theatre Miniature Unveiling of the Interior runs April 17 to 19. Ashby and Jedd will be on hand to give a behind-the-scenes-look at KSBMC's newest miniature structure. Several other high-profile artisans will be presenting demonstrations throughout the two days, which also includes a silent auction of collectible miniatures. For more information or to register, visit www.ksbminiaturescollection.com or call 859-806-6477.



Table and chair by Mark Murphy and Mary Grady O'Brien



The well-stocked Kilgus Drug Store counter



This white dress with embroidered flowers is a replica of one Kaye wore as a girl on the day of Queen Elizabeth's coronation.